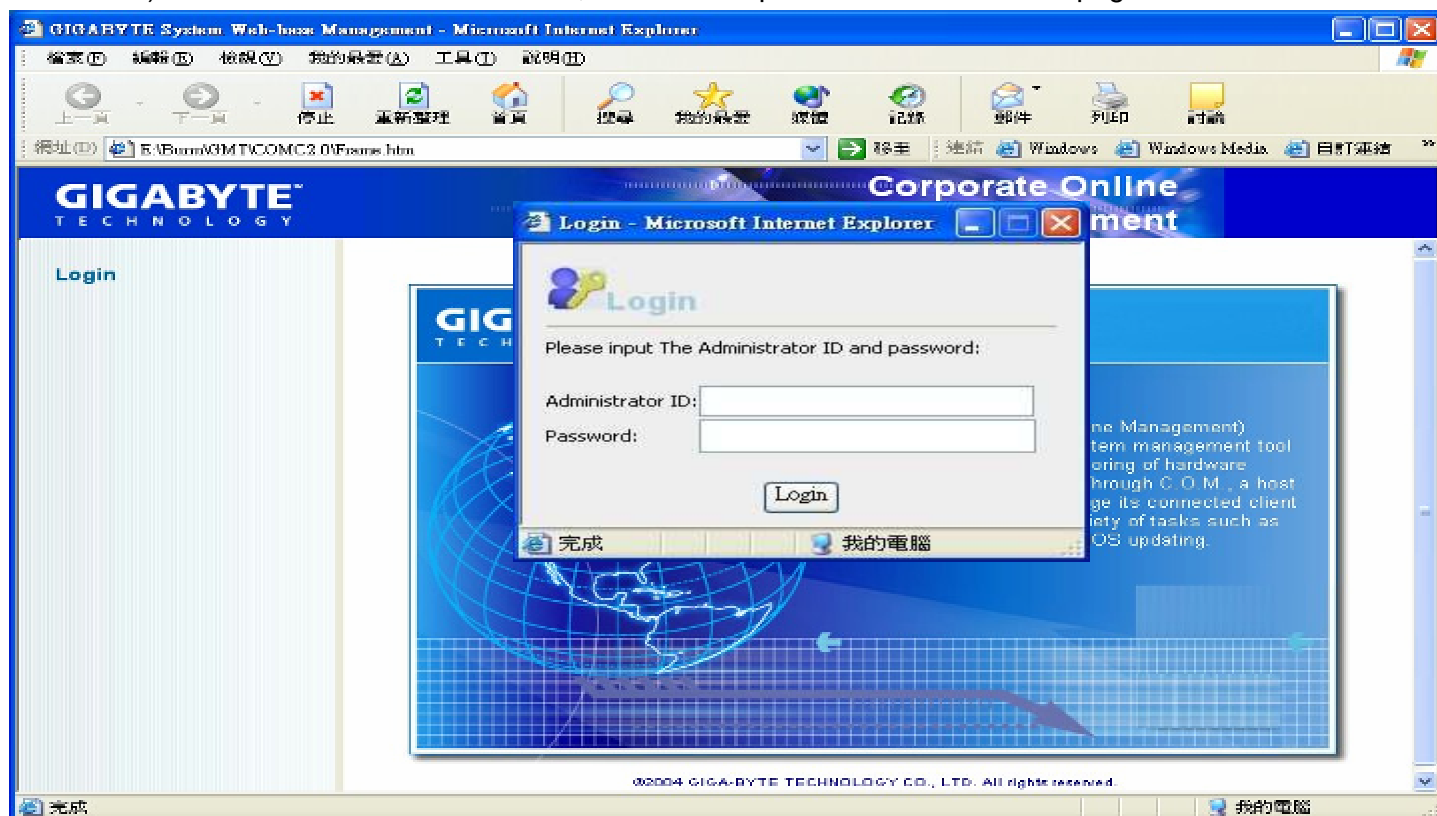
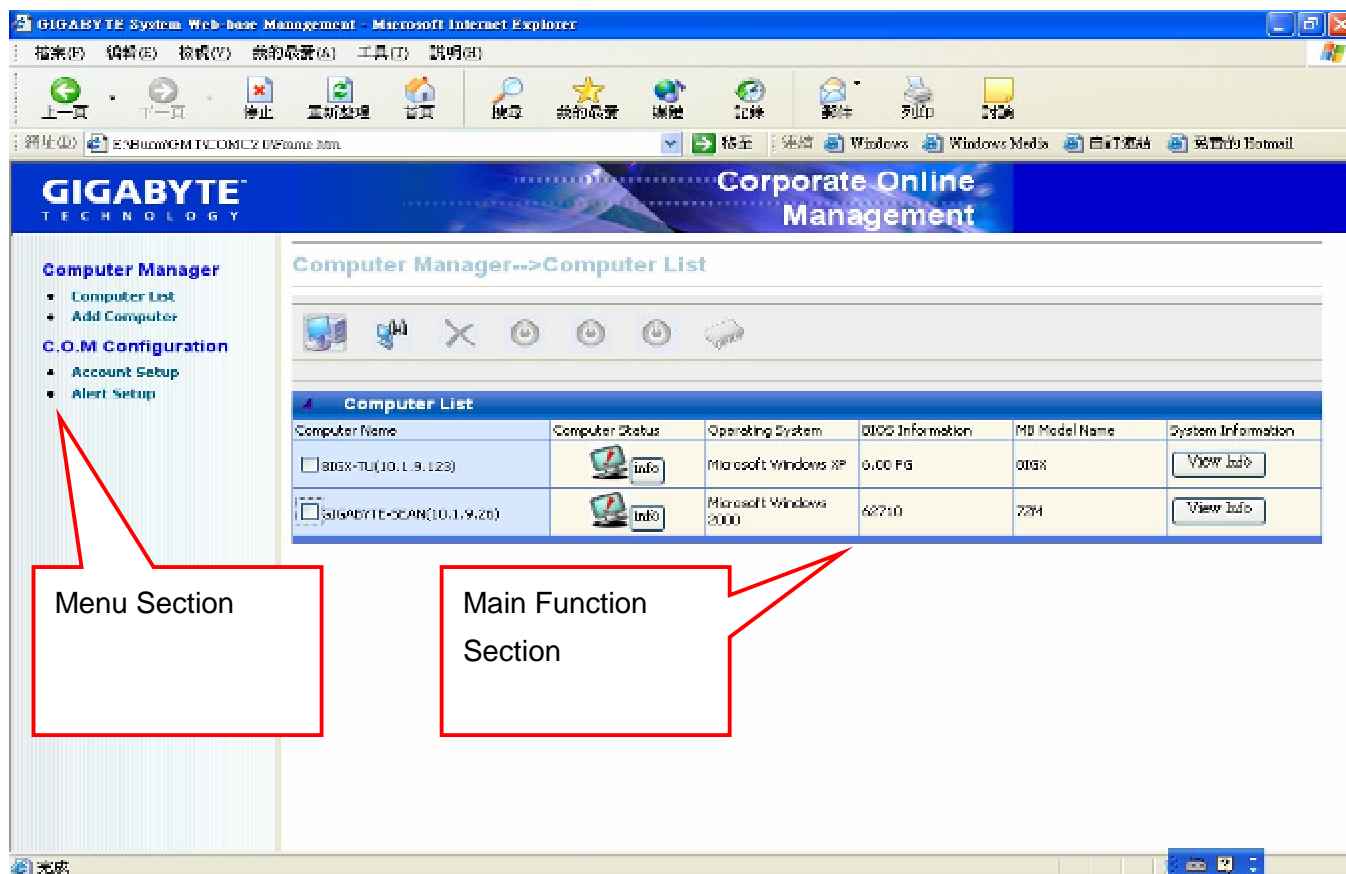


During the start up of GIGABYTE G.O.M. application, click on the “Login” located on the left side screen. At the popup login dialog window, enter the Administration ID & Password ( ID & Password requested during installation). After authorization confirmation, it will further proceed to G.O.M. main page.

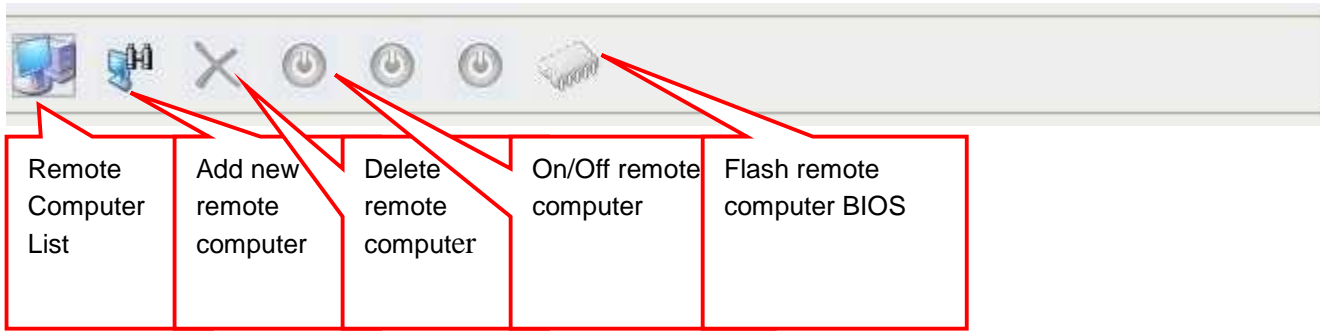


### G.O.M Main Page,

The main page is separated as, “Menu section” on the left and “Function Section” on the right. Click “Computer Manager” to enter computer management section. Click “G.O.M Configuration” to enter G.O.M preferences section.



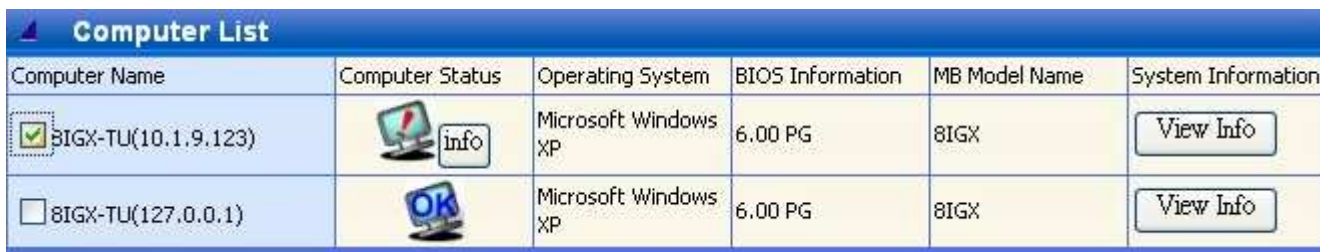
## Computer Manager toolbar introduction



The grayed out icons are not functional until remote PC are selected



## Computer List function introduction

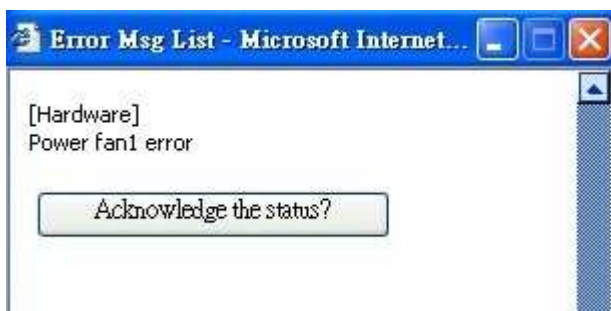


## Detail Introduction

- 1.Computer Name: Display remote PC's name and IP
- 2.Computer Status: Display remote PC's current status, show as follow :



When remote PC encounters any error, click on 'Info' button to display information of remote PC.



Click on 'Acknowledge the status?' to close 'Error info' dialog window.



Remote computer without any errors



Remote computer is currently flashing Bios

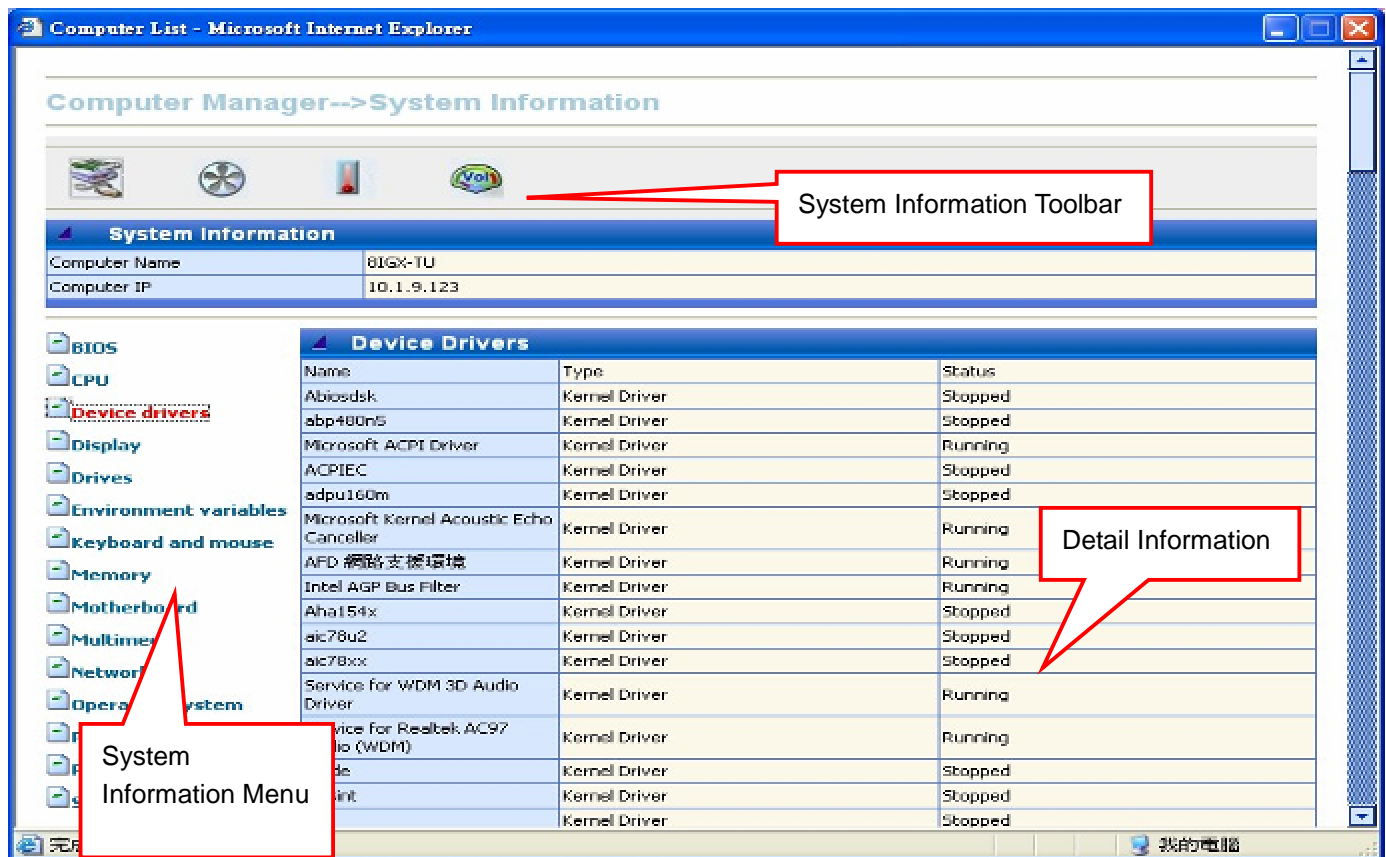
3. Operating System: Displays the Operating System used in the remote PC.

4. BIOS Information: Displays the current BIOS version of remote PC

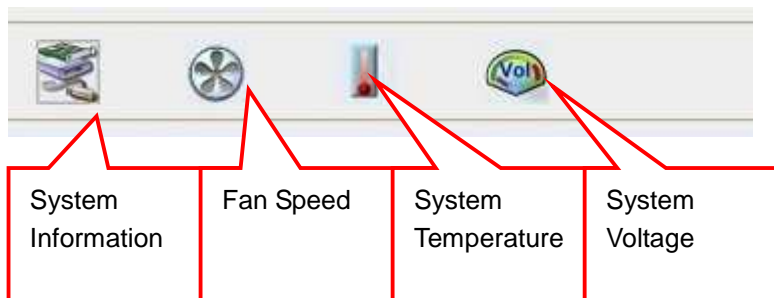
5. MB Model Name: Displays the motherboard model of remote PC.

6. System Information: Displays the system information of remote PC.

Click "View Info" to view remote PC system information



System Information Toolbar,

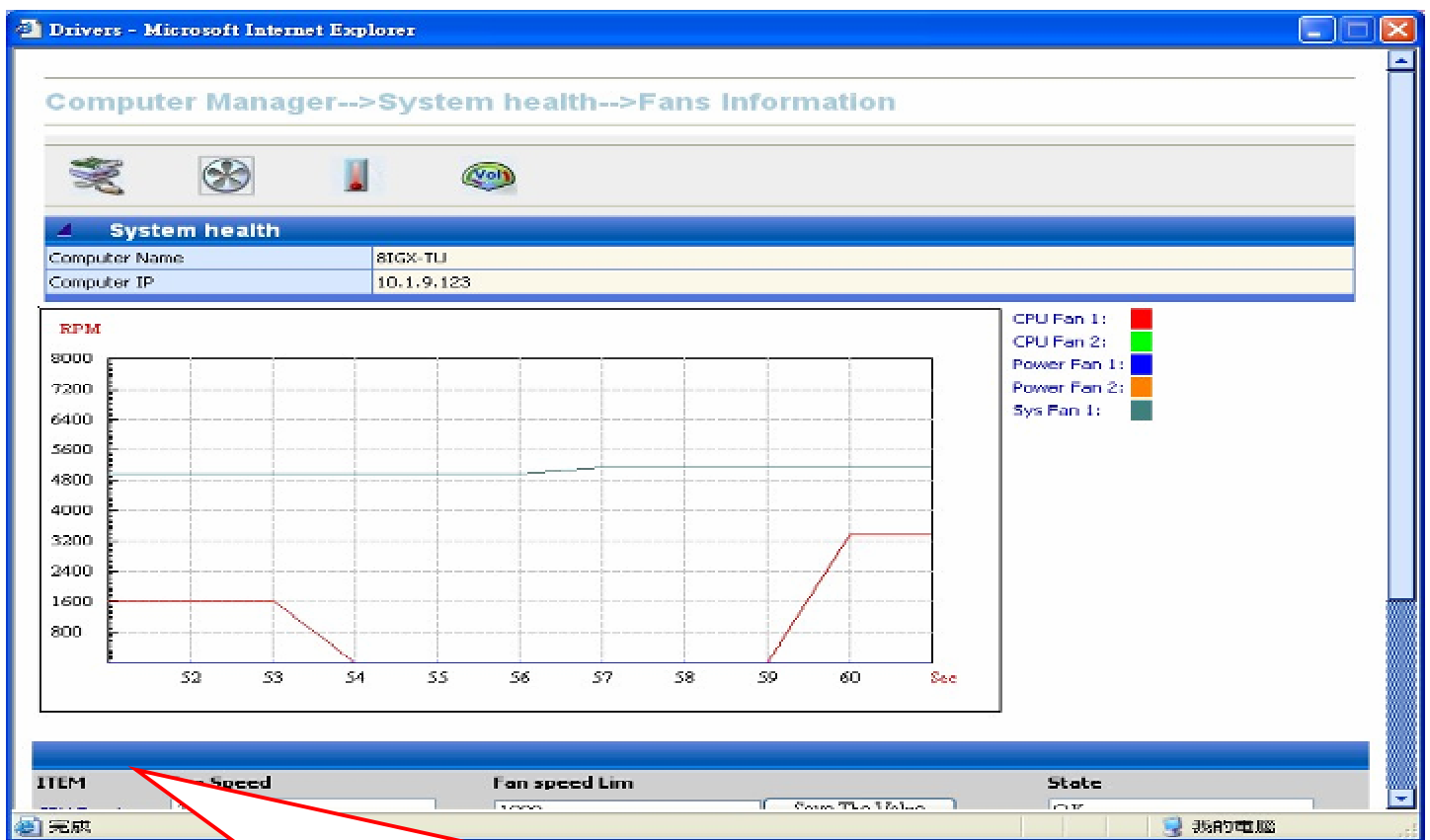


Select system information on the left menu to view detail information, details as follow

1. BIOS: System BIOS release date, version information
2. CPU: System CPU frequency, serial number information
3. Device drivers: System device drivers information

- 4.Display: System display, graphics card information
- 5.Drives: System storage device capacity, model type, usage status information
- 6.Environment variables: System environment variables information
- 7.Keyboard and mouse: System keyboard, mouse information
- 8.Memory: System memory usage status, capacity information
- 9.Motherboard: System motherboard information
- 10.Multimedia: System multimedia device information
- 11.Network: System LAN card, network settings information
- 12.Operating system: System operating system type, version information
- 13.Ports: System communication ports settings information
- 14.Processes: System applications process information
- 15.Smart: System hard disk Smart information

[Fan Speed],[System Temperature],[System Voltage] section displays system instant status information



**Detail Information Table**

ITEM	Fan Speed	Fan speed Lim	State
CPU Fan 1	<input type="text" value="3515"/>	<input type="text" value="1000"/> <input type="button" value="Save The Value"/>	<input type="text" value="OK"/>
CPU Fan 2	<input type="text" value="-1"/>	<input type="text" value="1000"/> <input type="button" value="Save The Value"/>	<input type="text" value="Not Support"/>
Power Fan 1	<input type="text" value="0"/>	<input type="text" value="1000"/> <input type="button" value="Save The Value"/>	<input type="text" value="Error"/>
Power Fan 2	<input type="text" value="-1"/>	<input type="text" value="1000"/> <input type="button" value="Save The Value"/>	<input type="text" value="Not Support"/>
Sys Fan 1	<input type="text" value="4963"/>	<input type="text" value="1000"/> <input type="button" value="Save The Value"/>	<input type="text" value="OK"/>

Detail Information Table displays detail readings and threshold value. If reading exceeds threshold limits, "No

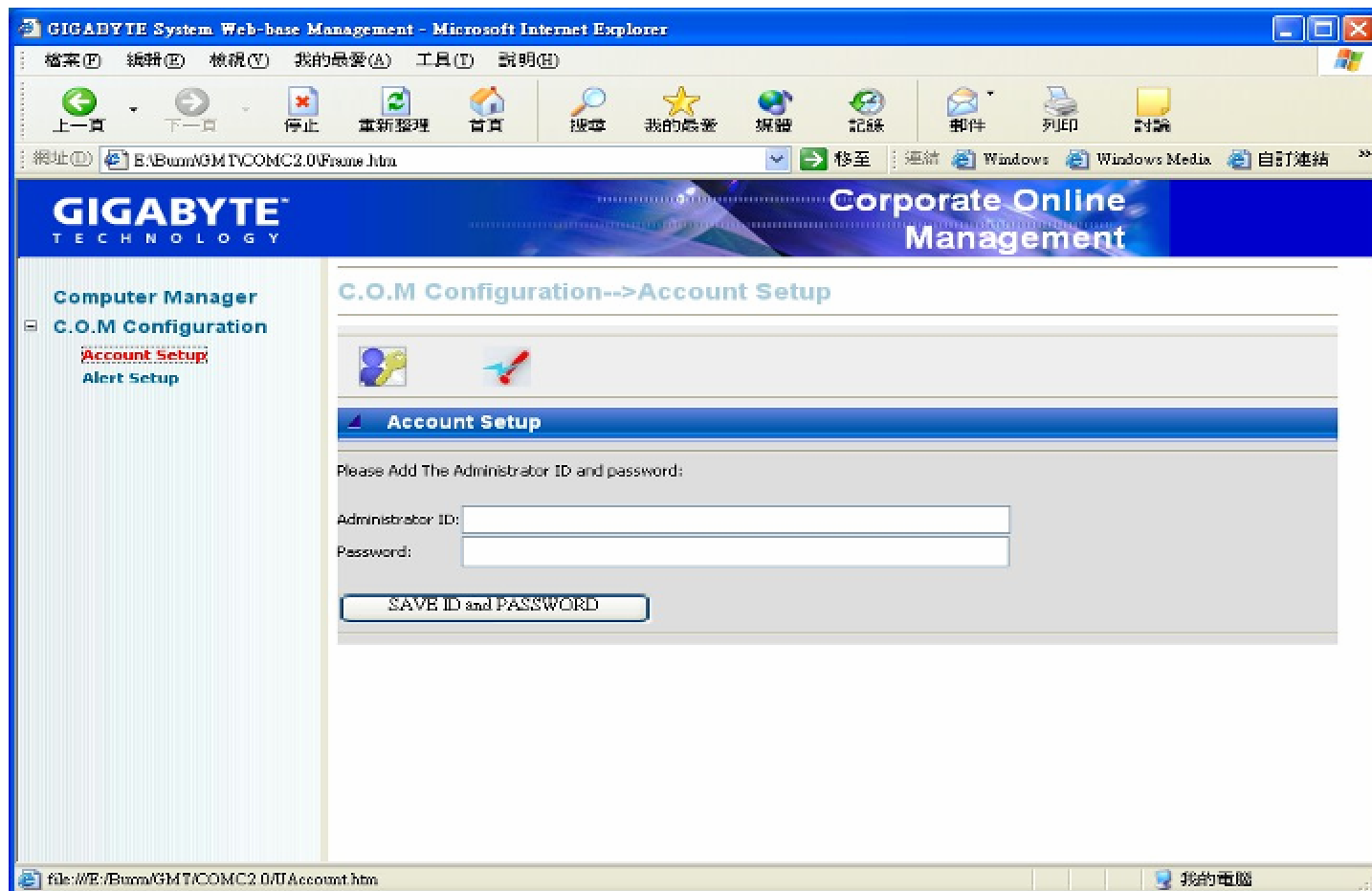
Support”

will be display. “Fan Speed Lim” value is adjustable.

Click ”G.O.M Configuration” on the left menu to enter G.O.M preferences section.

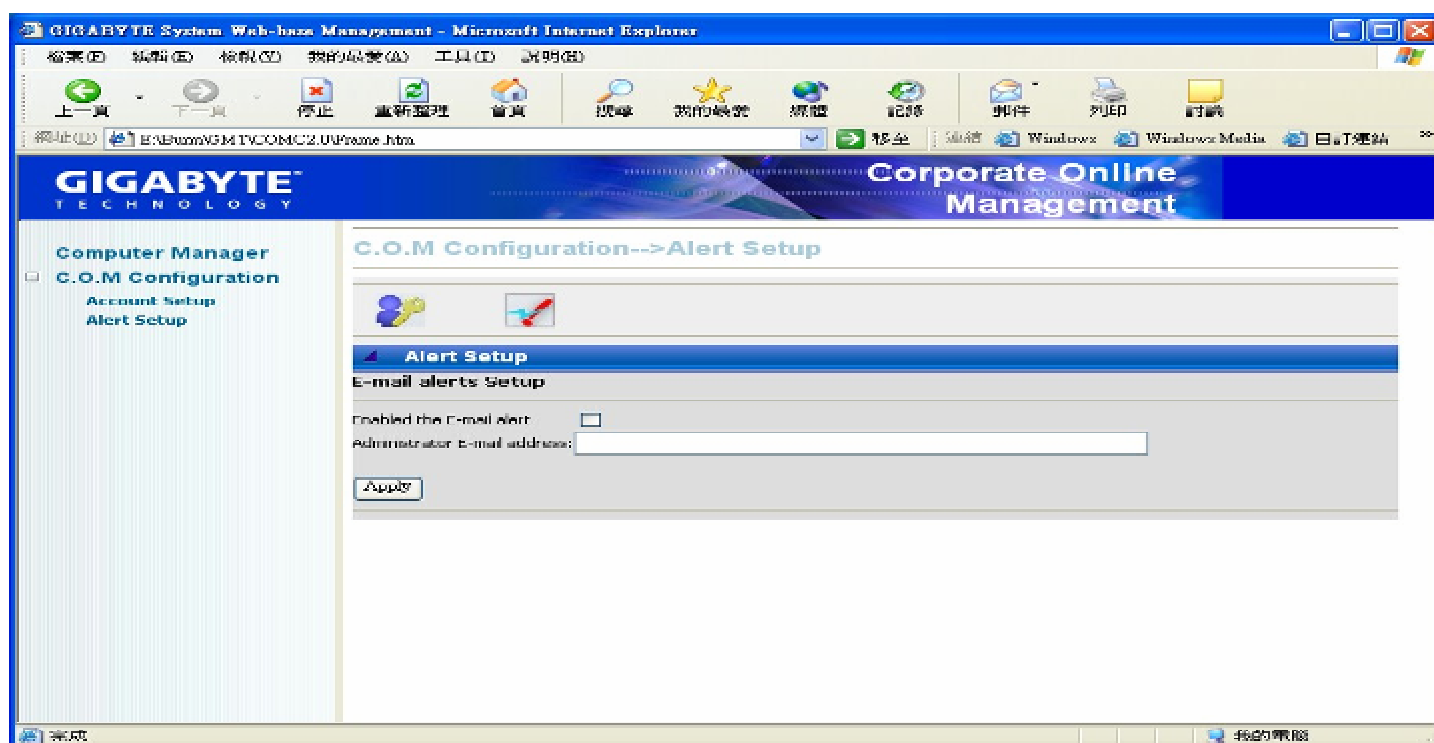
Click ”Account Setup” to enter account setup section. Click “Alert Setup” to enter error message setup page.

[Account Setup]



Setup Administrator ID and Password, new ID and Password will be valid on next login.

[[Alert Setup]



Enable/Disable E-mail alert to send e-mail to Administrator when error occurs.