
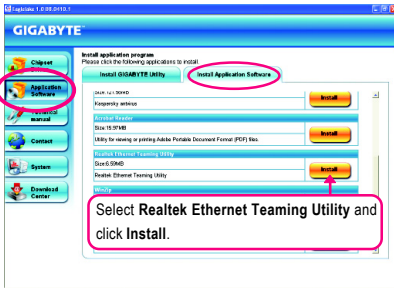


# Teaming

Dual LAN with Teaming functionality enabled on this motherboard allows two single connections to act as one single connection for twice the transmission bandwidth, making data transmission more effective and improving the quality of transmission of distant image(s). Fault tolerance on the dual LAN network prevents network downtime by transferring the workload from a failed port to a working port.

 The speed of transmission is subject to the actual network environment or status even with Teaming enabled.

## A. Enabling Teaming Functionality in Windows XP:




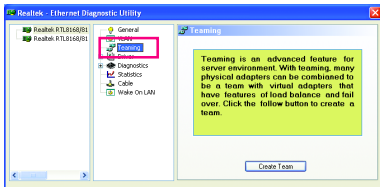
Step 1:

Insert the motherboard driver disk and select **Application Software**, **Install Application Software**. Click **Install** under **Realtek Ethernet Teaming Utility** for installation. Restart your system when completed.



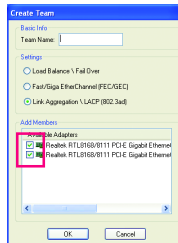
Step 2:

The **Realtek Ethernet Diagnostic Utility** icon  appears in the system tray after the system restarts. Double-click the icon to access the utility.



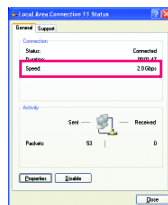
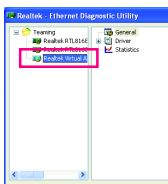
Step 3:

Choose **Teaming** and click the **Create Team** button.



Step 4:

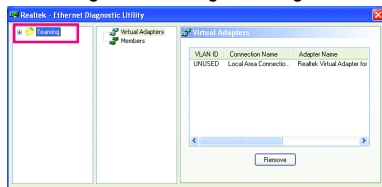
Give a name for the Team, e.g. Teaming, and set up the Teaming mode based on your hub's specifications. Select the check boxes for the two available adapters and click **OK**.



Step 5:

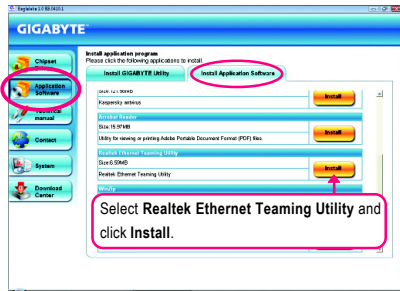
After you complete the setup, you will see the third virtual network interface. Go to **Local Area Connection Status** and you will see the connection speed is 2.0 Gbps.

## Removing the Existing Teaming:



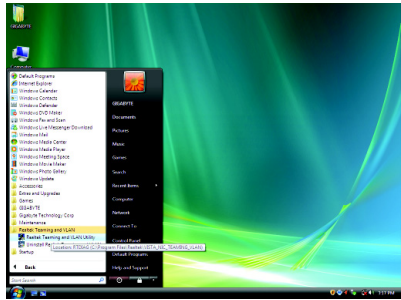
If you want to remove the existing Teaming, click the item you created, and then click the **Remove** button.

## B. Enabling Teaming Functionality in Windows Vista:



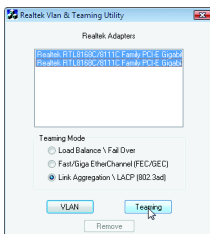
Step 1:

Insert the motherboard driver disk and select **Application Software**, **Install Application Software**. Click **Install** under **Realtek Ethernet Teaming Utility** for installation. Restart your system when completed.



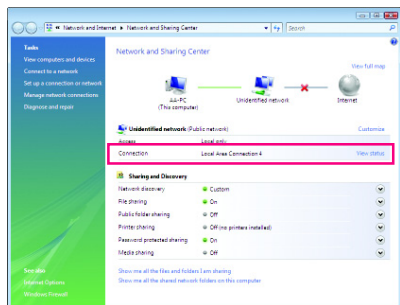
Step 2:

Click the **Start** icon. Point to **All Programs**, **Realtek Teaming and VLAN**, **Realtek Teaming and VLAN Utility** to access the utility.



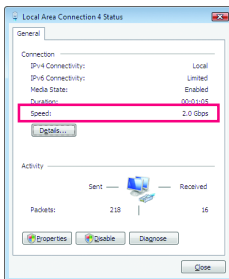
Step 3:

Select the two adapters and set up the Teaming mode based on your hub's specifications. Then click the **Teaming** button. (Two dialog boxes will appear during the setup process, click **OK** to continue). When the **Create Virtual Adapter For Teaming Complete** dialog box appears, click **OK** to complete.



Step 4:

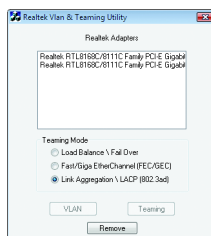
After the Teaming is created, you will see only one connection in **Network and Sharing Center**.



Step 5:

Click **View status** in **Network and Sharing Center** and you will see the connection speed is **2.0 Gbps**.

### Removing the Existing Teaming:



If you want to remove the existing Teaming, access the **Realtek Vlan & Teaming Utility** and click the **Remove** button.