

SetupAC User's Guide

YAMAHA Corporation

**Version 1.04
Aug. 31, 2000**

1.Descriptiton

SetupAC.exe is a software application required when running AC-XG under DOS. It runs following executions.

- Embedding FM & Sound Blaster
- Testing sound output of FM & Sound Blaster
- Controlling mixer

Supported platforms:

Manufacturer	Chipset	Vendor ID	Device ID
Intel Corporation	i82801AA (ICH)	8086	2415
	i82801AB (ICH0)	8086	2425
	i82801BA (ICH2 / ICH2-M)	8086	2445
	82443MX (440MX)	8086	7195
VIA Technologies Inc.	VTB2C686A (Super South)	1106	3058
Silicon Integrated	630	1039	7012

2.Getting Started

To start SetupAC, type the command below from the command line.

```
SetupAC [/s][/?]
```

Note: [] is an option and can be omitted.

When SetupAC is started without options, the setup utility dialog box will be like Figure 3.1. Refer to [3.Usage](#) for how to use the SetupAC utility.

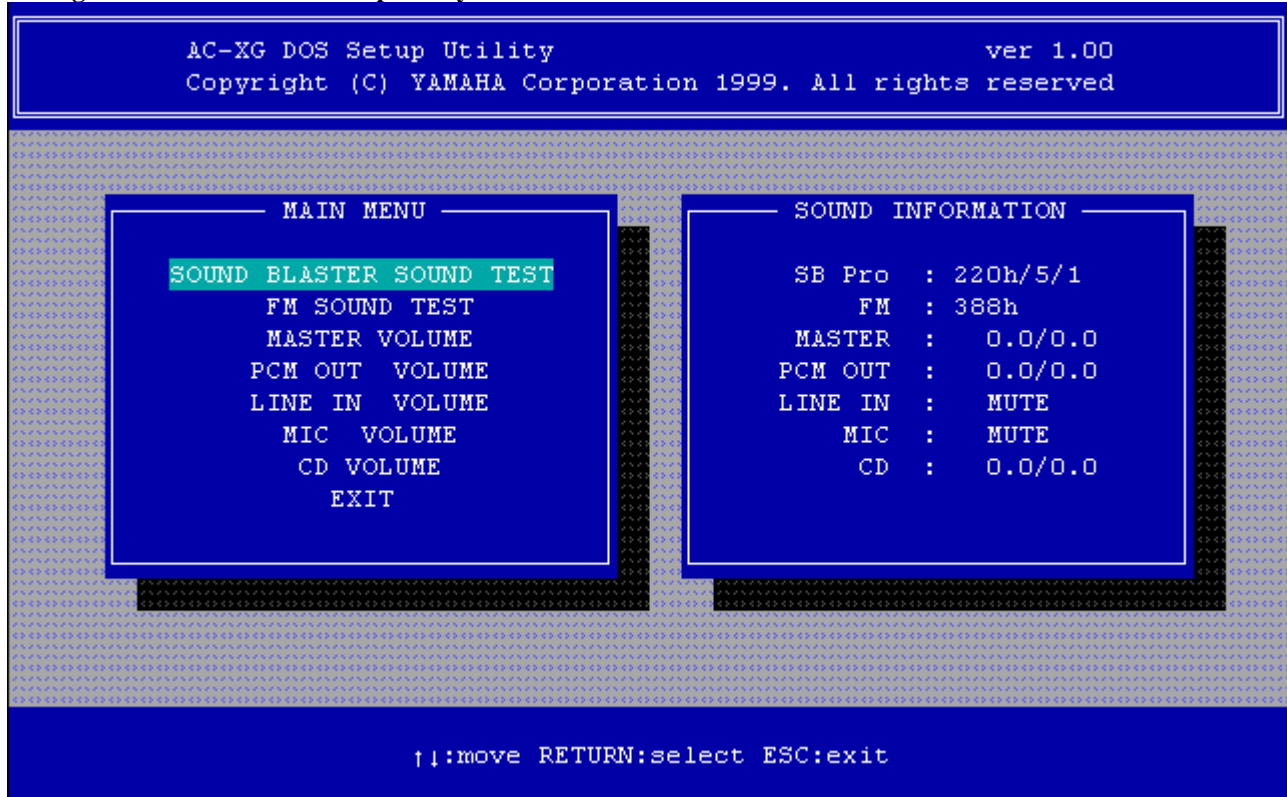
/S After installing FM & Sound Blaster, SetupAC sets up volumes of AC-XG based on the settings in the acxg.ini and closes. The configuration settings will be shown. When SetupAC is started with this option, the configuration settings of AC-XG cannot be modified.

/? Display the help file.

3. Usage

When SetupAC is started without any command options, it will show the AC-XG DOS Setup Utility dialog box as shown in Figure 3.1.

Figure 3.1 AC-XG DOS Setup Utility



Below are descriptions for how to operate the Setup utility.

3.1 Main Menu

On the Main Menu, use the up-down arrow keys to move to the desired item. Then hit the return key on the highlighted menu item to enter the menu.

Selecting **SOUND BLASTER SOUND TEST** or **FM SOUND TEST** will start sound testing on the corresponding device. For more details of sound test, refer to [4.Sound Test](#).

To adjust device volumes, select **MASTER VOLUME**, **PCM OUT VOLUME**, **LINE IN VOLUME**, **MIC VOLUME**, and **CD VOLUME** to enter the corresponding dialog boxes as described in [3.3 Volume Adjustment](#).

3.2 Sound Information

The current settings of AC-XG will be shown in the Sound Information dialog box.

The Sound Information in Figure 3.1 indicates that the AC-XG is currently configured with the following settings.

Sound Blaster Pro: I/O 220h, IRQ5 and DMA 1.

FM: I/O 388h.

Master Volume, PCM Out and CD volumes of AC-XG are all 0.0dB.

Line In and Mic are mute.

3.3 Volume Adjustment

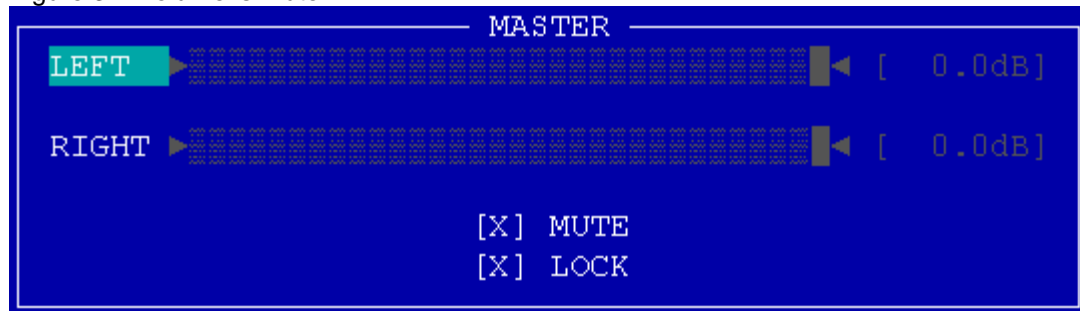
In the Volume Adjustment dialog box, use the up-down arrow keys to move to LEFT or RIGHT channel. Then use the left-right arrow keys to adjust the volume level of the selected channel.

Descriptions for keystrokes:

“m”: Turn on/off the MUTE option.

When “MUTE” is selected, “X” will be shown as in Figure 3.2 and the volume gauges of both channels become gray and inactive.

Figure 3.2 Volume is mute.



“l”: Turn on/off the LOCK option.

When “LOCK” is selected as shown in Figure 3.3, the volumes of both left and right channels will be locked at the current levels, and the volume change made to both channels will be identical. Turn off the LOCK option when you want to make volume changes individually to the left and right channels.

Figure 3.3 Volume is locked.



“p”: Turn on/off the +20dB option.

When MIC VOLUME is selected, the +20dB option will be shown. 20dB will be added to the MIC gain when selected.

Figure 3.4 MIC Volume Adjustment



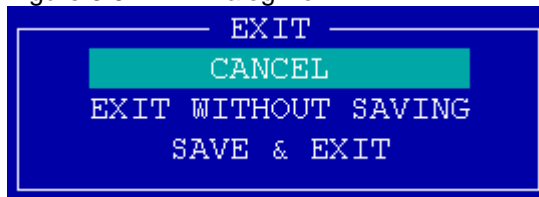
Note 1: The above keystrokes are valid only in lower case.

Note 2: Any changes to the settings will be immediately reflected to AC-XG.

3.4 EXIT

To quit SetupAC, press ESC or select EXIT from the Main Menu to go to the EXIT dialog box as shown in Fig. 3.5. Then use the up-down arrow keys to move between items on the EXIT menu. Press the return key to make the selection on the highlighted item.

Figure 3.5 EXIT Dialog Box



“**CANCEL**”: When “Cancel” is selected, it will return to the dialog box as shown in Fig. 3.1.

“**EXIT WITHOUT SAVING**”: When this is selected, the hardware will be configured with the settings shown in the Sound Information, but the program will be closed without saving the

current settings to acxg.ini.

“SAVE & EXIT”: When this is selected, the hardware will be configured with the current settings shown in the Sound Information and the program will be closed by saving the current settings to acxg.ini.

4. Sound Test

Sound Test is a function to check if the sound is correctly output to PC speakers or headphones connected to AC-XG. If the sound is not output correctly, the error dialog boxes shown in Fig.4.1 to F.g.4.4 will be displayed.

Figure 4.1: Sound Blaster cannot be found at I/O XXXh.



Figure 4.2: IRQX may be used by other device.



Figure 4.3: DMAX may be used by other device.



Figure 4.4: FM cannot be found at I/O XXXh.



When any of the above errors is shown, try to change the settings of Sound Blaster. After re-configuring the Sound Blaster settings, remember to re-start the computer for the new settings to take effect.

If no errors are shown, but the sound is not output correctly, check if the master volume and PCM out are mute. Make sure that neither Master Volume nor PCM out Volume is mute before executing sound test.

5. Configuration File: ACXG.INI

ACXG.INI is the configuration file used for saving default settings of SetupAC. The file includes following parameters.

Parameter	Description
MASTER	The value for Master Volume register 0x02
PCMOUT	The value for PCM_Out Volume register 0x18
LINE	The value for Line In Volume register 0x10
MIC	The value for Mic Volume register 0x0E
CD	The value for CD Volume register 0x12
LOCK	LOCK=0 The volume sliders of right and left channels can be independently adjusted. LOCK=1 The volume sliders of right and left channels are locked and volume adjustment to both channels will be identical.
SBFILE	Wave file for testing Sound Blaster
FMFILE	MIDI file for testing FM
LOADLEGACY	LOADLEGACY=0 TSR will not be loaded. LOADLEGACY=1 TSR will be loaded.
POWERLOWACTIVE	POWERLOWACTIVE=1 EAPD polarity will be used in Low Active.
PCBEEP	The value for PC-Beep Volume register 0x0A If this parameter is not defined, the register will not be configured.
FIRSTTRY	When FIRSTTRY=1, running setupac /s will always start the setup utility dialog. FIRSTTRY will become 0 when SetupAC is closed. So once setupAC is run and closed, running setupac /s will only set up mixer and load TSR without starting the setup utility dialog.

Note: The last values of MASTER, PCM, LINE, CD, MIC, and LOCK before SetupAC is closed will be saved to ACXG.INI.

6. Notes

6.1 SetupAC does not run in Windows DOS box.

6.2 EMM386.exe is required for loading TSR. If you do not hear sound during Sound Test, check if EMM386.exe is properly installed in the system

6.3 The following files are required to reside at the same directory with SetupAC.

acxg.ini The configuration file for saving AC-XG setup information.
ymh8.wav Wave file for sound test.
ymh.mid MIDI file for sound test.
fm midi.exe Program for playing back MIDI file.
lchtrad.exe FM & Sound Blaster Emulator.